



... (H, K, J ... / ...), ...

... (M, N, ... / ...), ...

... (C, ... / ...), ...

1. ...



2. ...



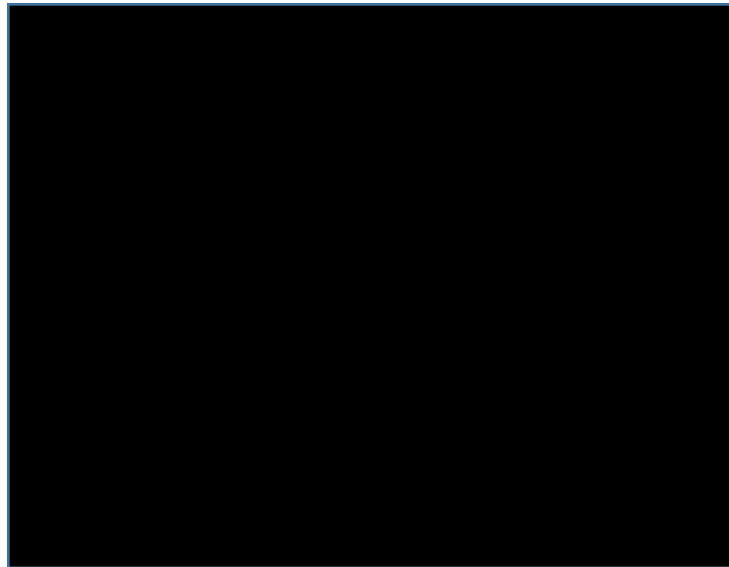


1. Accessing Home

1. Click on H: (Computer Name) in the left pane.
2. Right-click on the drive and select **1. Properties**.
 General Sharing Security Caching Indexing Options
3. Turn on **Share this folder on the network**.
4. Click **OK**.



5. Enter the path `\\whome1.ts.odu.edu\user\<username>` (Note: `<username>` is the user's username, e.g., `username@odu.edu`).



6. Click **OK**.
7. Click on H: (Computer Name) in the left pane.



1. Click on the **D** icon in the left-hand pane of the File Explorer window.

2. Click on the **J:** drive in the right-hand pane of the File Explorer window.

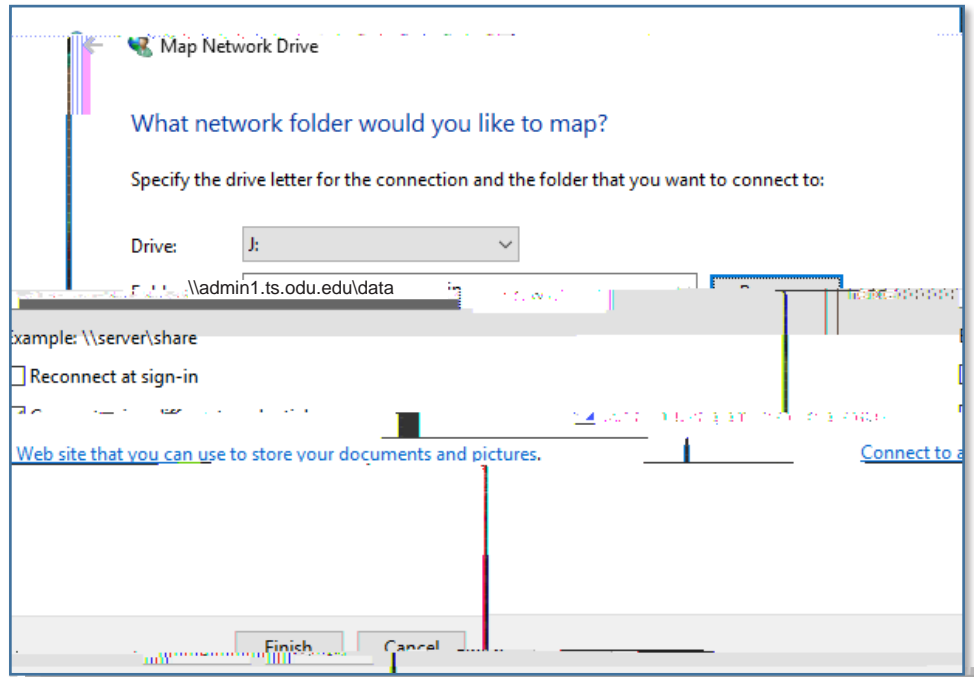
3. Click on the **F** icon in the left-hand pane of the File Explorer window.

4. Click on the **F** icon in the right-hand pane of the File Explorer window.

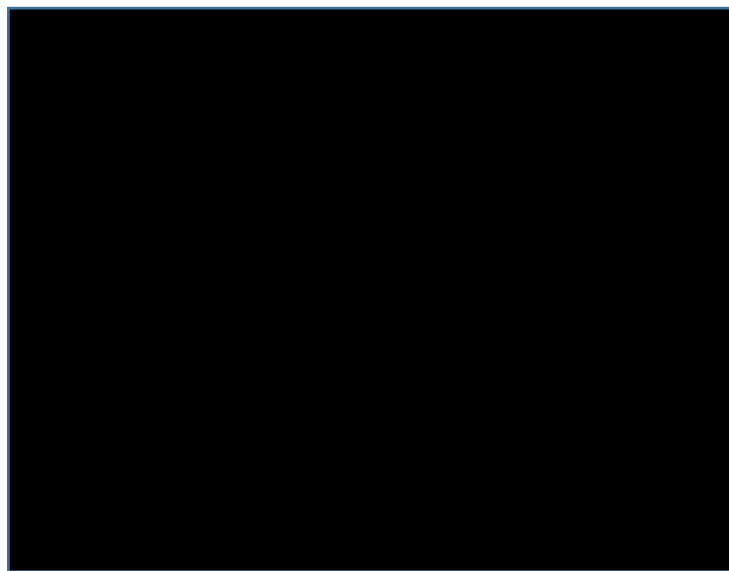
5. Click on the **F** icon in the left-hand pane of the File Explorer window.

6. Click on the **F** icon in the right-hand pane of the File Explorer window.

7. Click on the **F** icon in the left-hand pane of the File Explorer window.



8. Enter the user ID (Name) and password (Not your ODU ID) in the fields provided. (Name: `username@odu.edu`)



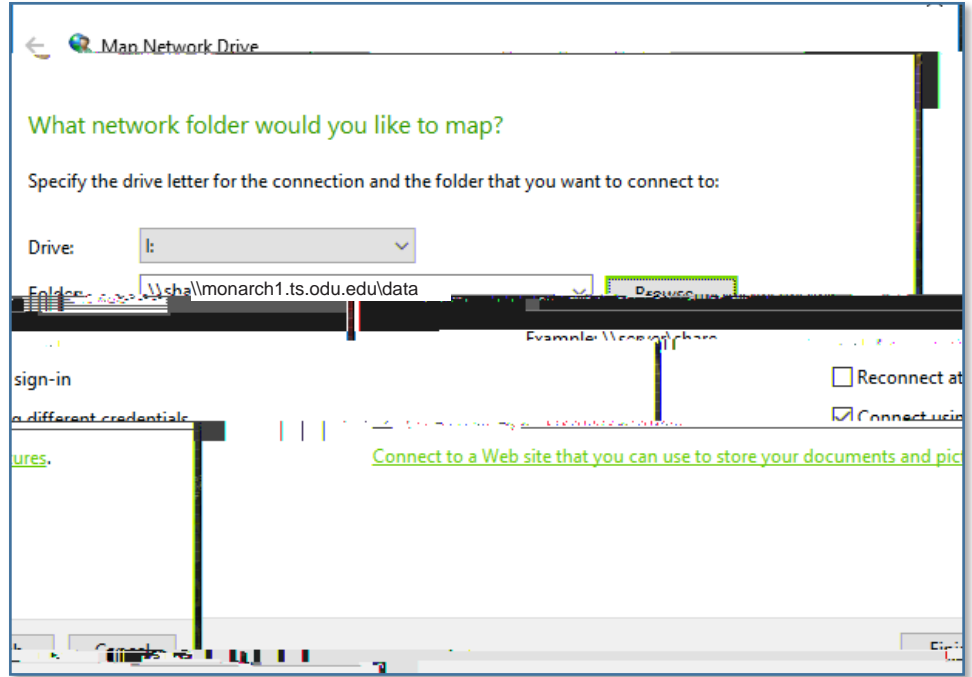
9. Click on the **F** icon in the left-hand pane of the File Explorer window.

10. Click on the **F** icon in the right-hand pane of the File Explorer window.



Task 1: Mapping a Network Drive (I:)

1. Double-click on the drive letter (I:) in the left-hand pane.
2. Select the folder you want to map to the drive letter (I:). In this case, it is the folder named "data".
3. The folder name will appear in the "Folder" field.
4. Click on the "Finish" button.



5. Enter the user ID (NOT the email address, i.e., `username@odu.edu`) in the 'Connect using different credentials' field.



6. Click on the 'Finish' button.
7. The mapped drive will appear in the left-hand pane.